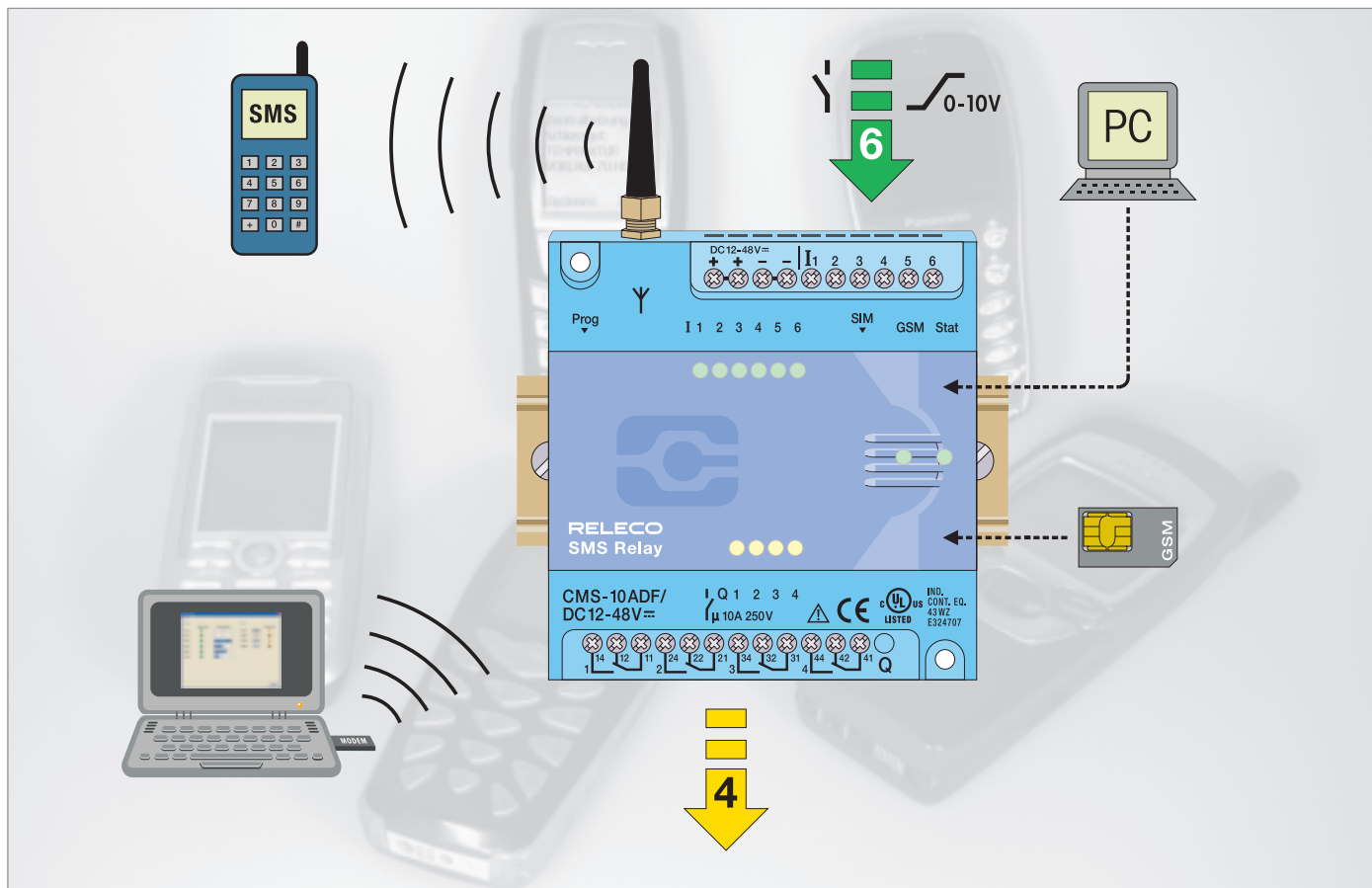


NEW
With Remote Access

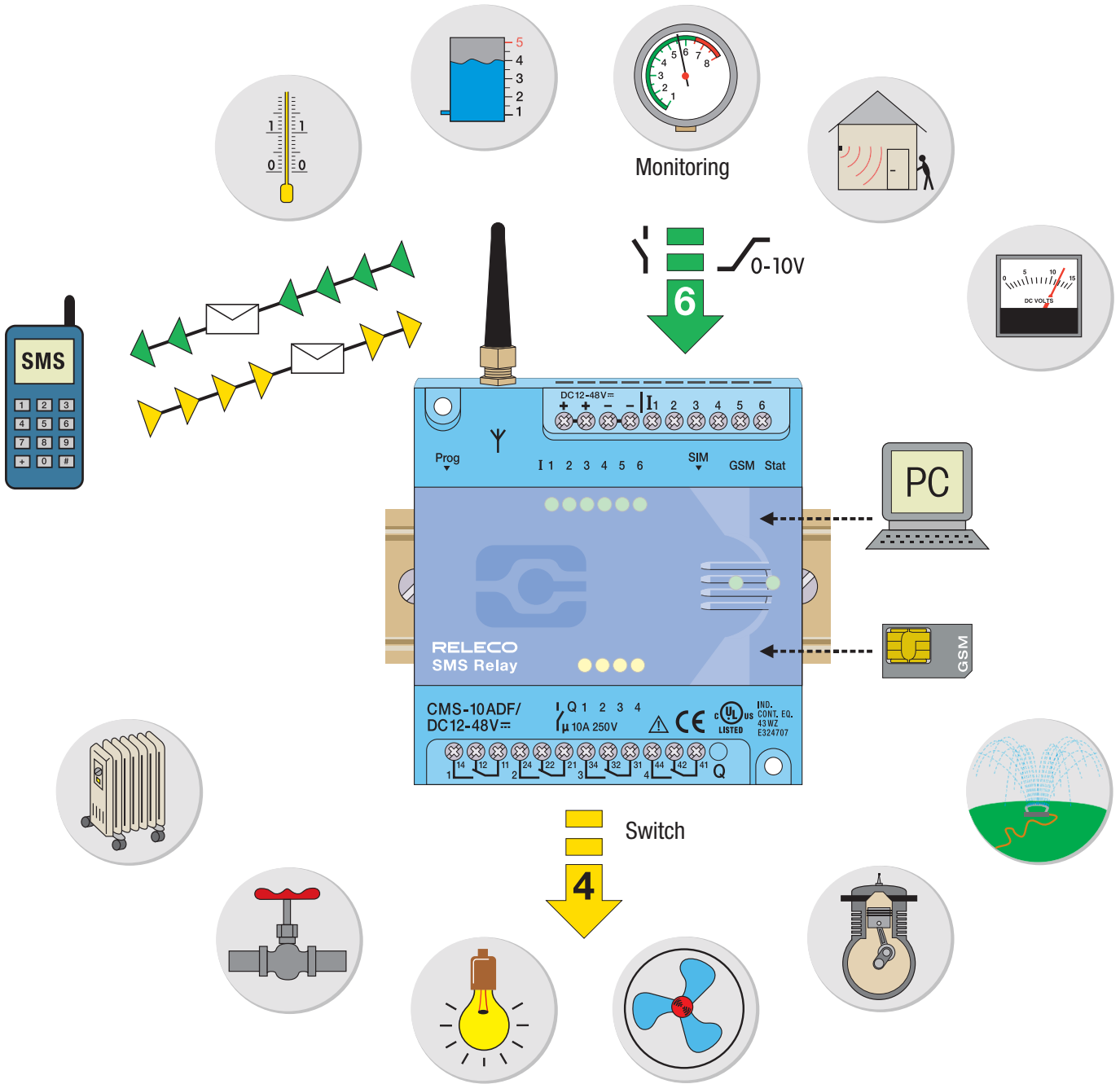
1.3 Automation Relays

1.3.1 Remote Control Relay

SMS Relay



- Easy configuration with PC and «Fast SMS Set™»-up configuration software
- Sequential alert messaging to 5 different subscribers
- Analog and/or digital inputs
- Monitoring of all inputs and outputs with SMS messaging
- Request of analogue values by SMS
- Remote control of outputs by SMS
- Power failure notification by SMS messaging
- Status change messages by SMS
- User defined message text
- Remote access and status display by PC/Notebook



Monitoring
Alerting
Controlling

Alerting,
Controlling
Monitoring

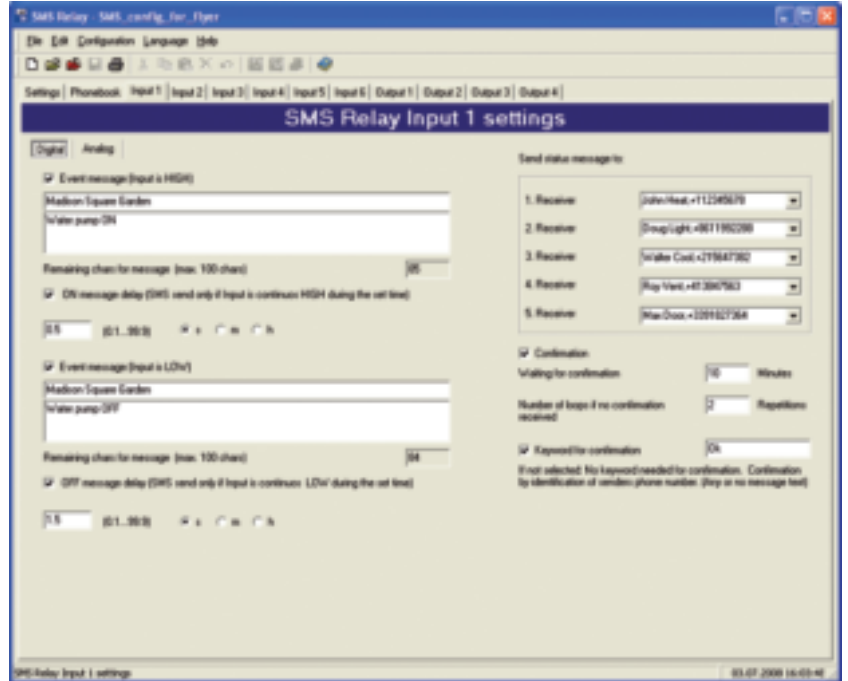
Controlling
Monitoring
Alerting



Digital Inputs

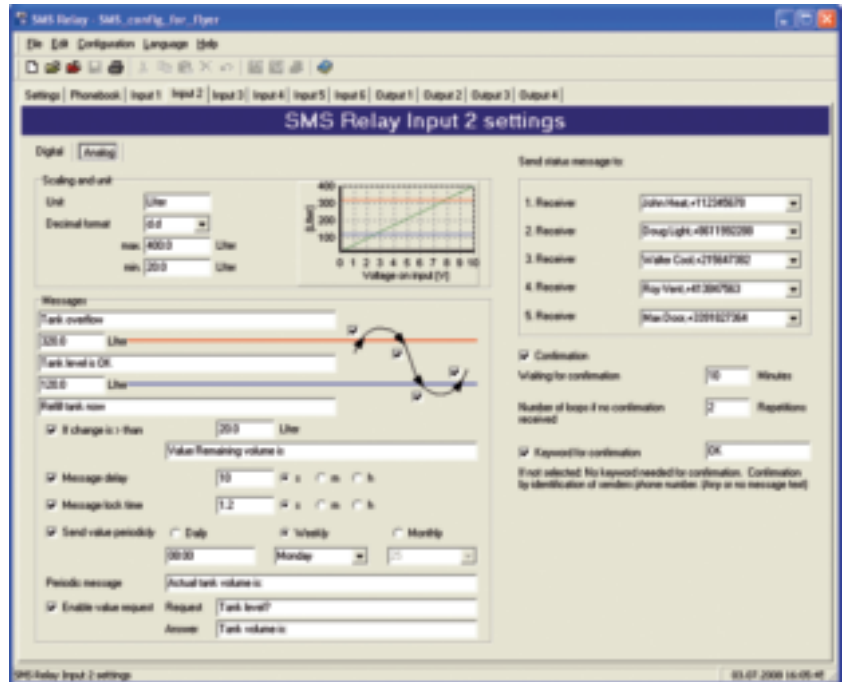
Language

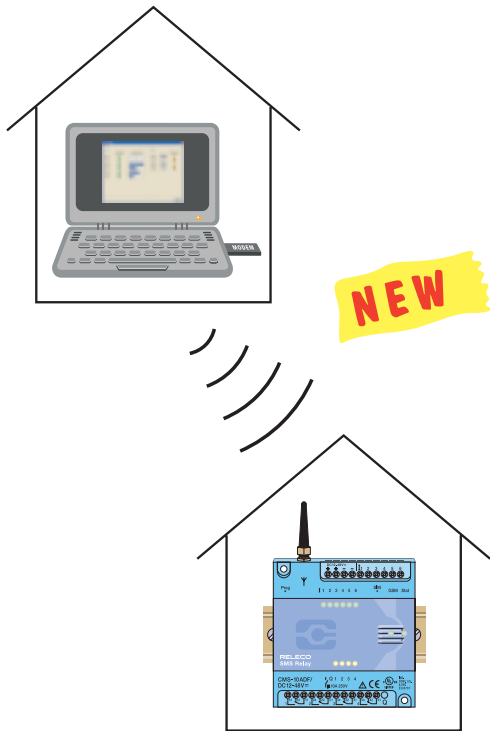
- Chinesisch vereinfacht
- Chinesisch traditionell
- Tschechisch
- Dänisch
- Deutsch
- Holländisch
- Englisch
- Spanisch
- Flämisch
- Französisch
- Italienisch
- Polnisch
- Russisch
- Schwedisch



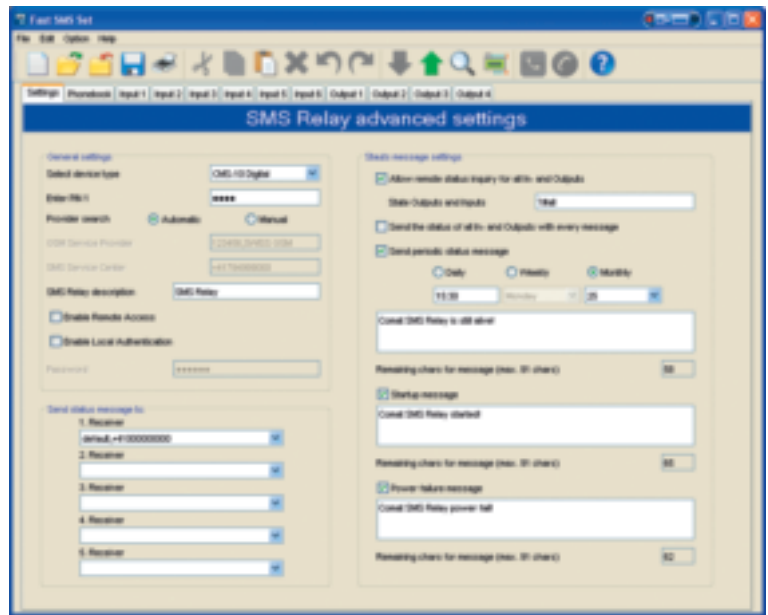
Analog Inputs

- Free selectable units e.g.:
l, kg, m³, psi, F, sqm, lbs
- Any min/max value can be defined.
Scale adjustment automatic
- Value inquire by SMS
- Automatic alerting if min/max values are exceeded
- Status display on PC/Notebook via GSM network





Basic settings



Status display on the PC screen

Remote maintenance

The option “remote access” allows users to change the device configuration without presence on site.

The connection with a serial cable is replaced with the communication over the GSM network.

For that purpose, the user has to establish communication with the SMS Relay via a GSM modem. (for example with CMS-GMS-MOD) connected to the PC.


As soon as the connection between the PC and the device is established, a new configuration can be downloaded or the existing configuration may be read out. This allows to simply save or change a phone number of a message receiver or to modify an analogue value or a time setting.

With the new configuration software it is also possible to display all Input and Output status as well as to switch Outputs without sending an SMS message to the device.

It has to be noted that establishing of communication and data transfers in the GSM network are subject of charges. These costs are variable depending on the provider and subscription. We recommend to keep the connection as short as possible.

The easy and comfortable handling of the SMS Relay is not affected with the new functions. The configuration software “FAS SMS SET” has not changed significantly and remains easy to use.

Technical Data's

| Typ | CMS-10F/AC 110-240V | CMS-10F/DC12-48V | CMS-10ADF/DC C12-48V |
|--|--|---------------------------------|---|
| Operating voltage | AC 110-240V~ 50/60Hz | DC 12-48V= max. 10% | DC 12-48V= max. 10% |
| Power consumption | 8VA/6W | 4,2W | 4,2W |
| Switching capacity  | 4 x 10 A 250 V; Sum of current max. 20 A | | |
| Temperature range | Tu: -25...+55° C Rel. humidity: 10...95% (non condensing) Protection IP 20 | | |
| Inputs | 6 x digital trigger level 85V~ | 6 x digital trigger level 9,5V= | 6 x digital trigger level 9,5V= or analog 0-10V= |
| Outputs | 4 x CO contacts μ 10A/250V AC-1 | | |
| Provider (Phone/Network) | User selectable (dependent on SIM card) | | |
| Frequency | GSM QuadBand (850; 900; 1800; 1900 MHz) | | |

Installation note

The base unit device is delivered fully operational and includes the small aerial CMS-ANT.

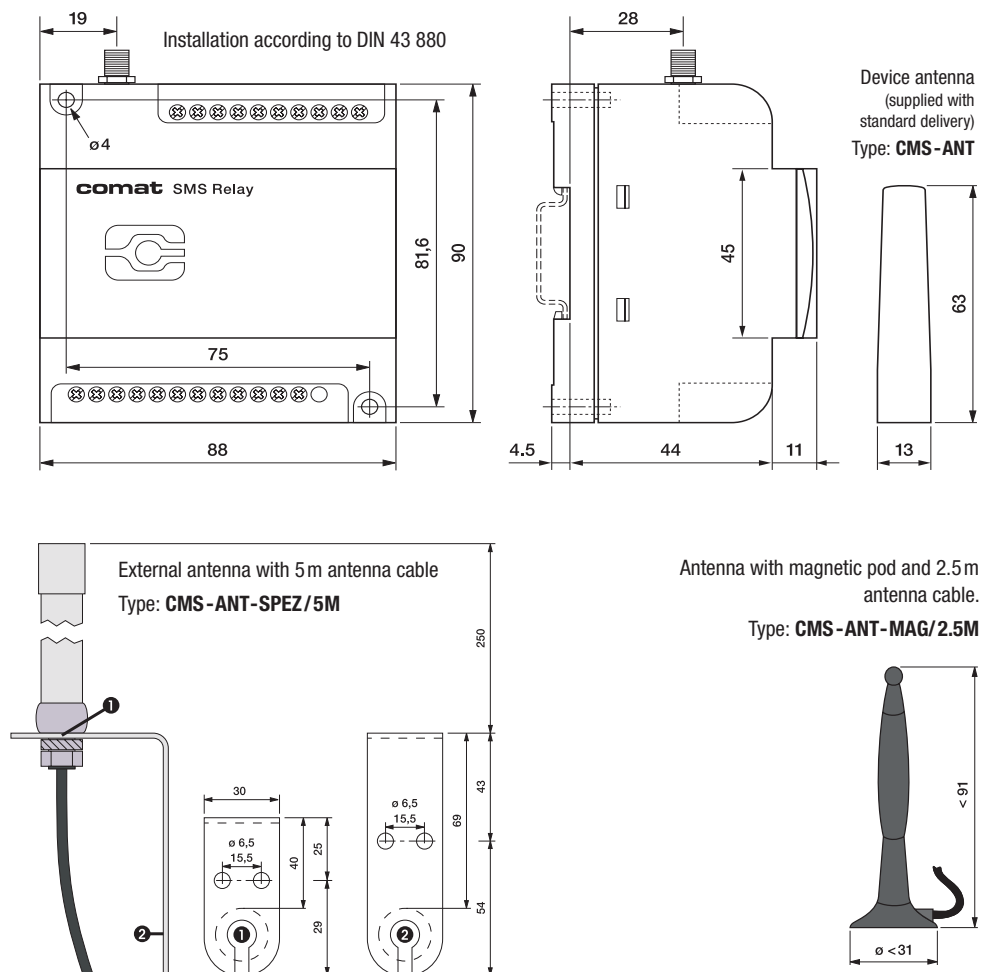
Before installation, the final location of installation must be taken into consideration.

For installation inside a control panel, the small device aerial may not be suitable and needs to be replaced by the antenna with magnetic pod (CMS-ANT-MAG/2.5M) or by the external antenna (CMS-ANT-SPEZ/5M).

These two antennas provide considerably better results and improve communication with the mobile network.

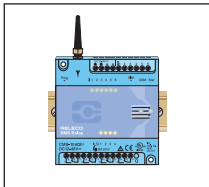
Please ask our product specialists if you require any support.

Dimensions



| Typ | Description |
|---|---|
| CMS-10F/AC110-240V | SMS Relay AC 110-240V with digital inputs incl. small antenna (CMS-ANT) |
| CMS-10F/DC12-48V | SMS Relay DC 12-48V with digital inputs incl. small antenna (CMS-ANT) |
| CMS-10ADF/DC12-48V | SMS Relay DC 12-48V with digital and analog inputs incl. small antenna (CMS-ANT) |
| KIT consisting of: A base unit with small antenna, antenna with magnetic pod and 2.5 m cable, programming cable, USB-RS232 Interface connector, CD with «FAST SMS SET™»-up programming software and operation manual | |
| CMS-10FKIT/AC110-240V | Installation kit complete with digital inputs (SMS Relay AC110-240V) |
| CMS-10FKIT/DC12-48V | Installation kit complete with digital inputs (SMS Relay DC12-48V) |
| CMS-10ADFKIT/DC12-48V | Installation kit complete with digital and/or analog inputs (SMS Relay DC12-48V) |
| Zubehör | |
| CMS-RS232 | SMS Relay programming cable RS232 |
| CMS-USB | USB-RS232 interface connector (including driver CD) |
| CMS-ANT | Small spare antenna for base unit, 63 mm long |
| CMS-ANT-MAG/2.5M | Antenna with magnetic pod and 2.5 m antenna cable |
| CMS-ANT-SPEZ/5M | External antenna with 5 m antenna cable |
| CMS-ANT-KAB/5M | Antenna cable 5 m (extension) |
| CMS-ANT-KAB/10M | Antenna cable 10 m (extension) |
| CMS-ANT-ADAPT | Adaptor FME to SMA plug |
| CMS-CAP | Device cover (spare) |
| CMS-CD | CD with FAST SMS SET -up programming software and manual |
| DR-15-24 | Power supply 15W, 24V. DIN-rail mounting |
| DR-30-24 | Power supply 36W, 24V. DIN-rail mounting |
| MK31-112-LU/24V DC | 1-channel voltage repeater |
| 4114 PReasy | Universal transmitter PReasy 4114 |
| 4501 | Display front (to PReasy 4114) |
| ZPT-10-H | PT100/PT1000 Amplifier |
| RF01-U | Room temperature sensor 0...50°C without display |
| RF01-U-D | Room temperature sensor 0...50°C with display |
| RTBSB-001-010 | Room thermostat 5...30°C with operating controls |
| WF50 ext-U | Outdoor temperature sensor -50...+50°C |
| KS-110 | AC sensor for monitoring of humidity and temperature in control panels, archives and cabinets |
| PS1 | Water gauge suitable for application of level measurements in water installations |
| CMS-GSM-MOD | GSM Module (Connected to USB port of the PC) for remote access to the SMS Relay |

Type


CMS-10F/...
CMS-10ADF/...
SMS Relay

- SMS Relay incl. small antenna 63 mm
- WITHOUT programming cable, magnetic pod antenna, USB converter and programming software
- Suitable for user which already possess the accessories


CMS-10FKIT/...
CMS-10ADFKIT/...
SMS Relay KIT

- SMS Relay incl. small antenna 63 mm
- Including programming cable, magnetic pod antenna with 2.5 m cable, USB converter USB-RS232, and programming software «FAST SMS SET™» with manual
- Suitable for user first user

Type



DR-15-24

Power supply

- Input
 - Voltage range: 85-264V AC, 120-370V DC
 - Frequency range: 47-63Hz
 - Max. current: 0,88A
- Output
 - DC Nominal voltage: 24V
 - Setting range: 21,6-26,4V
 - Power range: 0-0,63A
 - Nominal load: 15,2W



DR-30-24

Power supply

- Input
 - Voltage range: 85-264V AC, 120-370V DC
 - Frequency range: 47-63Hz
 - Max. current: 0,88A
- Output
 - DC Nominal voltage: 24V
 - Setting range: 21,6-26,4V
 - Power range: 0-1,5A
 - Nominal load: 36W



MK31-112-LU/24V DC

1-channel voltage repeater

- Input
 - Current: 4...20mA
 - Voltage: 0...10V DC
- Output
 - Voltage: 0...10V DC
 - Linearity: ≤ 0,1%
- Low temperature drift of less than 0.2% /K
- Galvanic separation of Input and Output circuit and supply voltage



4114 PReasy

Universal transmitter

- Input
 - Current: 0/4...20 mA
 - Voltage: 0/0,2...1; 0/1...5; 0/2...10V DC
 - PT100: 2-, 3- and 4 wire
 - TE types: B...W5
 - Potentiometer: 10Ω...100kΩ
 - Lin. Resistance: 0Ω...10kΩ
- Output
 - Current: 0/4...20 mA / 800Ω
 - Voltage: 0/0,2...1; 0/1...5; 0/2...10V DC



4501

Display/Programming panel for PReasy

- Communication interface for setting of operative parameters
- Can be plugged from one device to the other for data transmission
- Stationary display to visualize status of process data's
- Password protected
- LCD display with 4 lines



ZPT-10-H

PT100/PT1000 Amplifier

- Input: PT100; PT1000: 2-, 3-line switching
- Output: 0...10V DC
- Supply voltage: 15...35V DC
- DIN rail mounting

Type



RF01-U Room temperature sensor without display

- Integrated transducer
- Output: 0...10V DC
- Measuring range: 0°C...50°C
- Supply voltage: 24V AC/DC



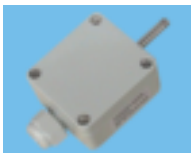
RF01-U-D Room temperature sensor with integrated display

- Integrated transducer
- Output: 0...10V DC
- Measuring range: 0°C...50°C
- Supply voltage: 24V AC/DC



RTBSB-001-010 Room thermostat with operating controls

- Suitable for temperature monitoring in closed rooms
- Output: 1 CO
- Setting range: 5°C...30°C
- Supply voltage: 230V AC (24V DC)



WF50 ext-U Outdoor temperature sensor

- Sensor for temperature measuring outdoors or in industrial storage- or cold chambers
- Output: 0...10V DC
- Measuring range: -50°C...+50°C
- Supply voltage: 15...24V DC
- Protection class: IP65



KS-110 AC sensor for indoors and outdoors

- Measuring of humidity and temperature in control panels, archives and cabinets
- **Temperature**
 - Measuring range: -40°C...+80°C
 - Measuring element: Solid state
 - Output: 0-10V
- **Humidity**
 - Measuring range: 0%...100% relative humidity
 - Measuring element: Capacitive
 - Output: 0-10V



PS1 Level and water gauge

- Suitable for applications in fountains or in water installations up to a depth of 5m (0-0.5 bar) Additional measuring ranges on request.
- Cable in special design with pressure compensation line
- Output signal: 0-10V, 3-wire
- Application temperature: +5°C bis +70°C



CMS-GSM-MOD Recommended modem for remote communication with the SMS Relay

QuadBand (850/900/1800/1900MHz)
Supports GPRS, CSD, CSF and SMS
USB 2.0 Full speed (12Mbits/s) interface
With driver for Windows 2000/XP/XPPro/Tablet and Linux

All above products are available from Releco. Don't hesitate to contact us.

Our SMS Relay is very suitable also for applications with products of EnOcean technology. With accessories of this innovative solar powered wireless technology, these sensors can be used anywhere without expensive wiring.