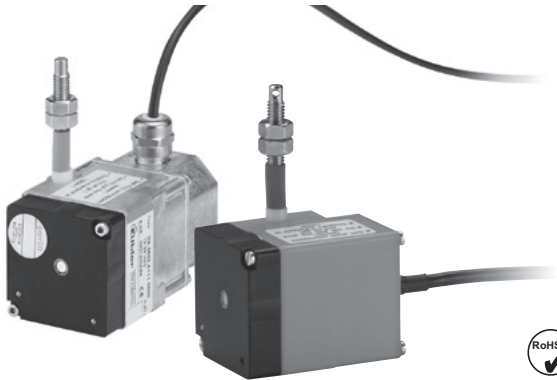


# Linear Measuring Technology

**Draw wire mechanics with encoder or analogue sensor**

**Miniature, analogue**

**Measuring length max. 2 m**



The miniature draw wire encoder with analogue output is characterised by its compact design. It is available with a potentiometer, voltage or current output.

## Compact and simple

- Measuring length up to 2000 mm
- For applications with a low traversing speed
- Easy to install

## Order code miniature draw wire encoder

**D5.350X . AXX . 0000**  
Type    a    b    c

### a Measuring range

- 1 = 1000 mm
- 2 = 2000 mm

### b Output circuit

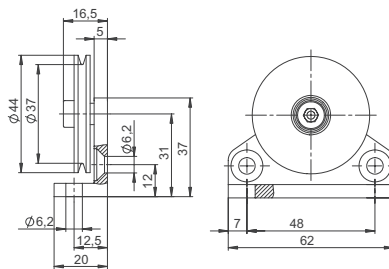
- 11 = analogue output 4 ... 20 mA
- 22 = analogue output 0 ... 10 V DC  
supply voltage 15 ... 28 V DC
- 33 = Potentiometer output 10 kΩ

### c Type of connection

- 1 = cable 2 m (for measuring range 1000 mm: axial)  
(for measuring range 2000 mm: radial)
- 2 = M12 connector, 4-pin, radial  
(only available for measuring range 2000 mm)

## Accessories for draw-wire encoder

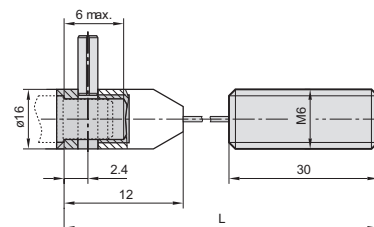
### Guide pulley



Ordering information for the set  
 - Guide pulley (anodised aluminium)  
 - 2 x countersunk screws  
 for lateral fixing,  
 - 2 x socket screws  
 for fixing on a flat surface

**8.0000.7000.0045**

### Extension cable



Steel wire 2 m  
 Steel wire 5 m  
 Steel wire 10 m  
 Paraleine 2 m

**8.0000.7000.0033**

**8.0000.7000.0034**

**8.0000.7000.0035**

**8.0000.7000.0032**

# Linear Measuring Technology

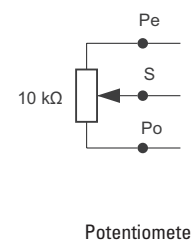
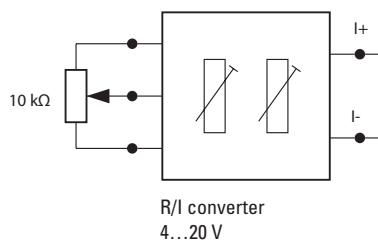
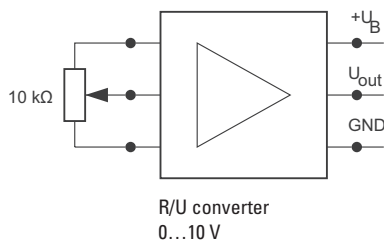
**Draw wire mechanics with encoder or analogue sensor**      **Miniature, analogue**      **Measuring length max. 2 m**

Mechanical characteristics (draw wire mechanics)	
Measuring range	1000 mm / 2000 mm
Extension force $F_{min}$	2 N
Repeat accuracy	$\pm 0.15$ mm
Linearity	$\pm 0.35$ %
Working temperature	0°C ... 50°C
Weight	approx. 200 g / 320 g
Material	housing plastic / zinc die cast wire stainless-steel $\varnothing$ 0.45 mm plastic-coated

Electrical characteristics			
Analogue output	0 ... 10 V	4 ... 20 mA	Potentiometer 10 k $\Omega$
Supply voltage	15 ... 28 V DC	–	–
Temperature range	0 ... 50°C	0 ... 50°C	0 ... 50°C
Load	max 500 $\Omega$	max 500 $\Omega$	–
CE compliant acc. to	EN 61000-6-2, EN 61000-6-4, EN 61000-6-3		

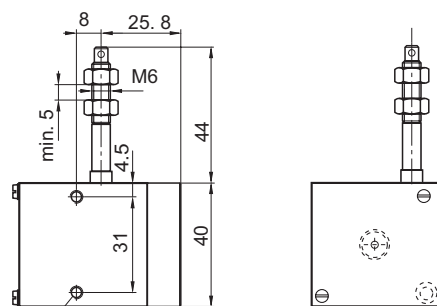
## Terminal assignment

Colour	BN	WH	GN
Pin M12	1	2	3
0 ... 10 V	+ 24 V DC	GND	$U_{out}$
0 ... 20 mA	I+	I-	n.c.
Potentiometer	Po	Pe	S

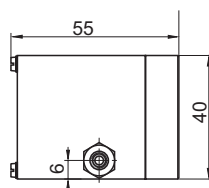


## Dimensions

for measuring range 1000 mm

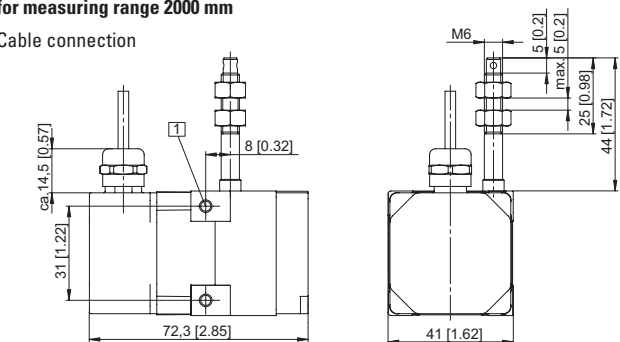


M4, max. screw-in depth 8 mm



for measuring range 2000 mm

Cable connection



1 2 x M4,  
max. screw-in depth 8 mm

M12 connector

